

DCI Polyclonal Antibody
Catalog # AP73412**Specification**

DCI Polyclonal Antibody - Product Information

Application	WB, IHC-P
Primary Accession	P42126
Reactivity	Human
Host	Rabbit
Clonality	Polyclonal

DCI Polyclonal Antibody - Additional Information**Gene ID** 1632**Other Names**

ECI1; DCI; Enoyl-CoA delta isomerase 1, mitochondrial; 3, 2-trans-enoyl-CoA isomerase; Delta(3), Delta(2)-enoyl-CoA isomerase; D3, D2-enoyl-CoA isomerase; Dodecenoyl-CoA isomerase

Dilution

WB~~Western Blot: 1/500 - 1/2000. IHC-p: 1:100-300 ELISA: 1/20000. Not yet tested in other applications.

IHC-P~~N/A

Format

Liquid in PBS containing 50% glycerol, 0.5% BSA and 0.09% (W/V) sodium azide.

Storage Conditions

-20°C

DCI Polyclonal Antibody - Protein Information**Name** ECI1**Synonyms** DCI**Function**

Key enzyme of fatty acid beta-oxidation (Probable). Able to isomerize both 3-cis (3Z) and 3-trans (3E) double bonds into the 2- trans (2E) form in a range of enoyl-CoA species, with a preference for (3Z)-enoyl-CoAs over (3E)-enoyl-CoAs (By similarity) (PubMed:7818490). The catalytic efficiency of this enzyme is not affected by the fatty acyl chain length (By similarity).

Cellular Location

Mitochondrion matrix {ECO:0000250|UniProtKB:P23965}

Tissue Location

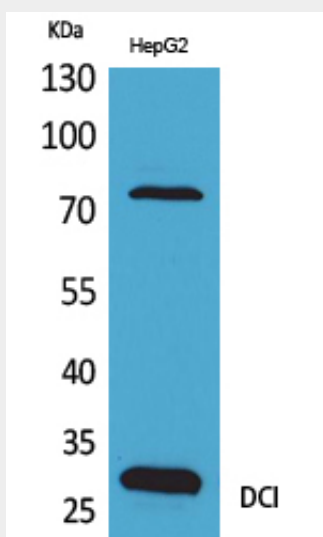
Expressed in liver (at protein level).

DCI Polyclonal Antibody - Protocols

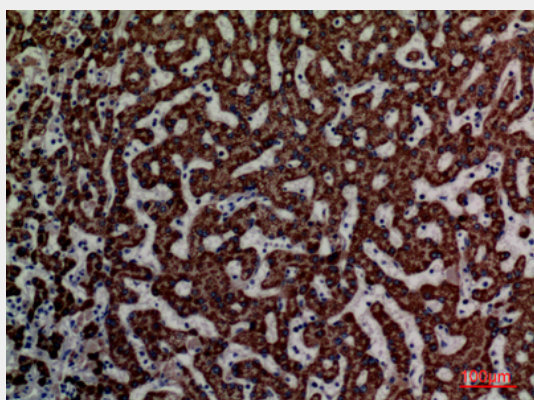
Provided below are standard protocols that you may find useful for product applications.

- [Western Blot](#)
- [Blocking Peptides](#)
- [Dot Blot](#)
- [Immunohistochemistry](#)
- [Immunofluorescence](#)
- [Immunoprecipitation](#)
- [Flow Cytometry](#)
- [Cell Culture](#)

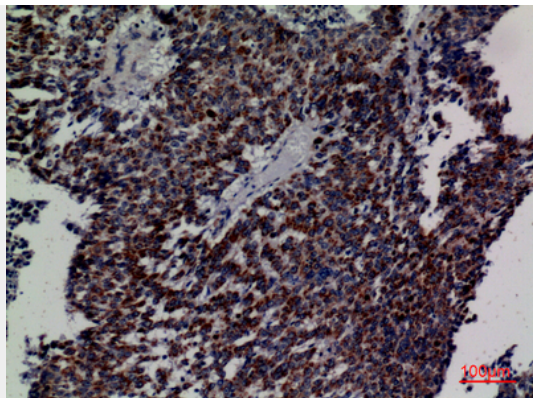
DCI Polyclonal Antibody - Images



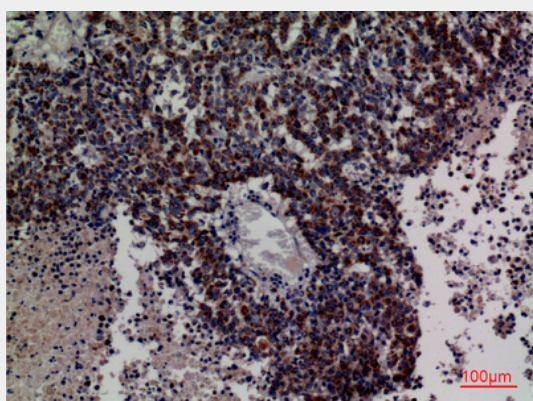
Western Blot analysis of HepG2 cells using DCI Polyclonal Antibody.. Secondary antibody was diluted at 1:20000



Immunohistochemical analysis of paraffin-embedded human-liver, antibody was diluted at 1:100



Immunohistochemical analysis of paraffin-embedded human-lung-cancer, antibody was diluted at 1:100



Immunohistochemical analysis of paraffin-embedded human-lung-cancer, antibody was diluted at 1:100

DCI Polyclonal Antibody - Background

Able to isomerize both 3-cis and 3-trans double bonds into the 2-trans form in a range of enoyl-CoA species.